

Feel Feel the Ripples of Joy ! Joy !



Anandlahari

1 & 2 BHK Flat @ Sus Road

Possession Date: March 2014

About Project...

"It's the smallest of the things which brings biggest of the joy"Zen Speaks.

And what's better place than your own home to experience this joy! Agreed it's all emotions which make our life but at the end of the day when your are relaxing in your very owned four walls, what counts most is the day has ended on a smiling note! It's a joyful emotion which lingers in your mind with which you drift in a peaceful sleep & you start your new day with that freshness. And only a perfect home of your's can give you this feel! Exactly this is what we want to achieve when we build a home for our customers, may it be planning or selecting amenities for the building which is going to be a home for many!

Presenting **Anandlahari**, the name itself means Ripples of Joy at fastly developing suburb Sus, a gate way to Institutes like Symbiosis, D.Y.Patil as well as easy connectivity to Hinjewadi IT park. Here we have tried to design homes which will be Cozy, Comfortable to live & yet Pocket fit!

- Sanjay Deshpande & Team Sanjeevani

Site Add.: S.No. 129, Sus - Lavale Road, Sus gaon, Sus, Pune - 411 021



Anandlahari Special

- Porceleno tile flooring in entire flat. Anti-skid ceramic tile flooring for terrace & toilets.
- Granite kitchen platform with stainless steel sink.
- Special gauge M.S. door frames, rustproof stone door frames for toilets / wet areas.
- M.S. Safety door at entrance along with designer main door.
- PVC doors for toilets & flush doors for other rooms.
- Powder coated aluminum sliding windows with mosquito net with built-in special burglar proof M.S.Grills for all windows.
- Marble window sill for all windows.
- Coloured designer glazed tile dado of 7ft. height in kitchen, toilets and bath.
- Concealed plumbing with chromium plated fittings.
- Hot & cold mixing units in toilets and bath.
- Concealed electrification work within the entire flat.
- Oil bond paint for all internet surface.
- Provision for cable T.V. & Telephone point in living room & master bedroom.
- Lift.
- Intercom connectivity to all units.
- Power backup for common street light, lift & water pump.
- Decorated entrance lobby with M.S. safety gate.
- Common toilet in parking for drivers & security staff.

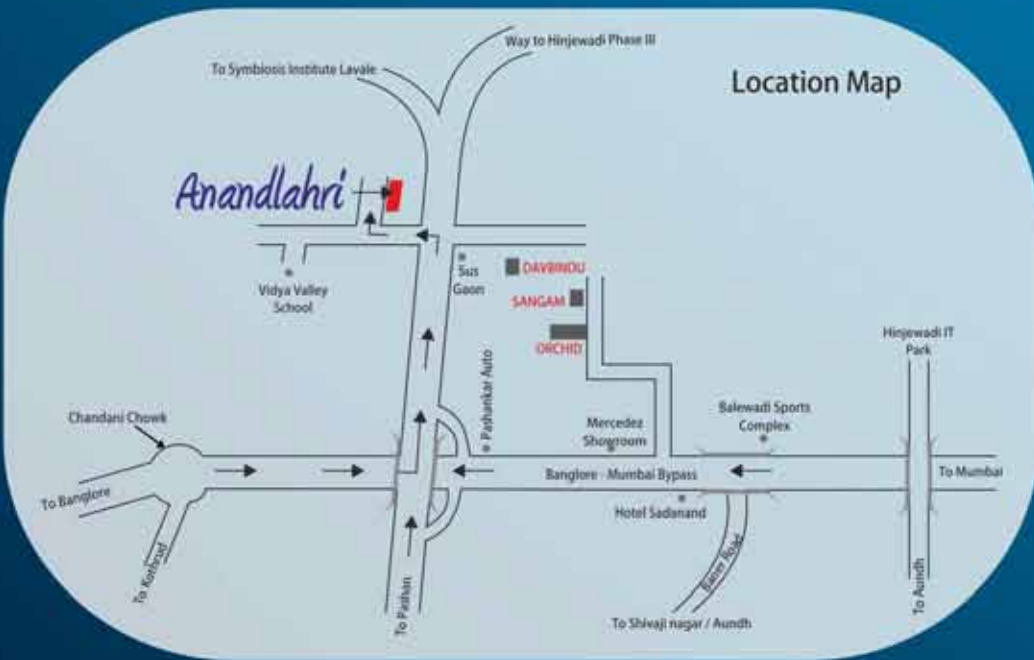
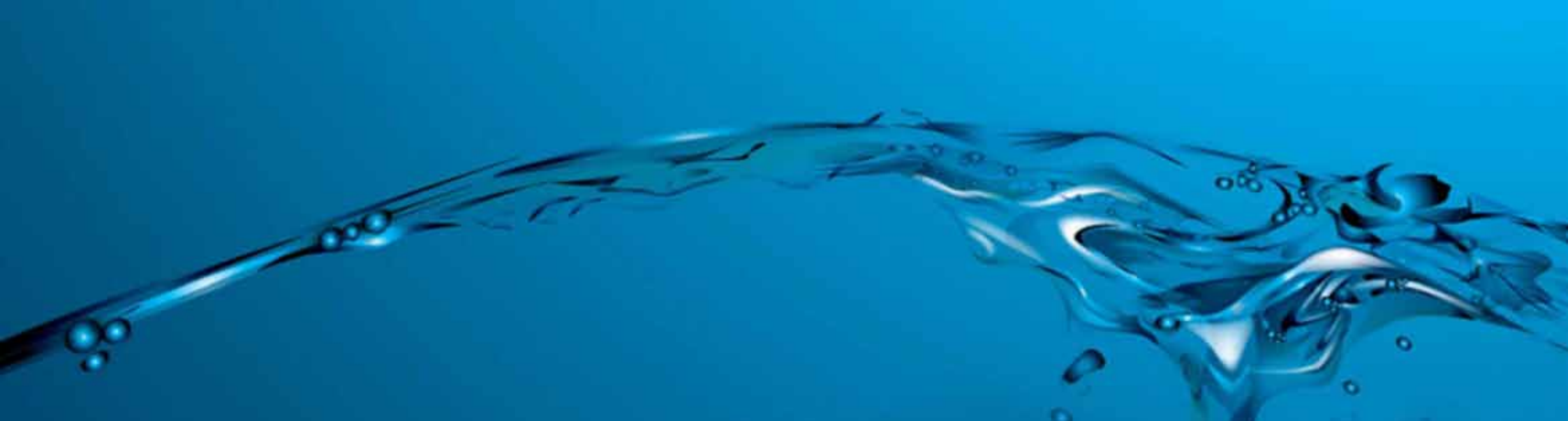
Anandlahari Greens

- Central solar water heating system.
- Bio diversity based plantations around the building.
- Energy saving lights in common areas.
- Hydro pneumatic water pump system to avoid wastage of water.
- Water saving dual flush tanks in toilets.
- Rain water harvesting systems to utilize of rain water.
- Vermiculture pits to take care of your garbage.
- Arrangement of under ground & over head water tanks for assured water supply.

Note: In the interest of the building, we don't accept any change in toilet arrangement or plumbing positions.

Anandlahari

1 & 2 BHK Flat @ Sus Road



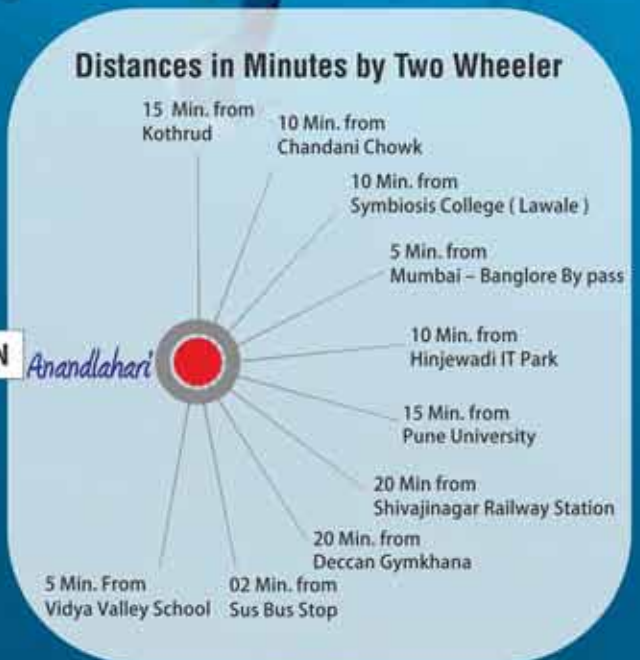
CREDITS

Architects:
Ankur Associates

RCC Consultants:
J + W Associates

Legal Advisor:
Adv. Shyam Lanke

Chartered Accountant:
Naik-Rahalkar & Associates



Samidha Ventures

A project by: **Sanjeevani Developers**
Think Green, Think Life



In Association with:
Sameer Group
in PHASE with CURRENT limited
www.sameergroup.co.in



101, Sujal, 100' Riverside DP Road, Patwardhan Baug, Pune - 411 052,
Tel.: 020 - 2543 4021, Telefax: 020 - 2545 4757,
mail: sales@sanjeevanideve.com, web : www.sanjeevanideve.com

Note: All the drawings, views, specifications are proposed and developer at his will and wish can change the same.